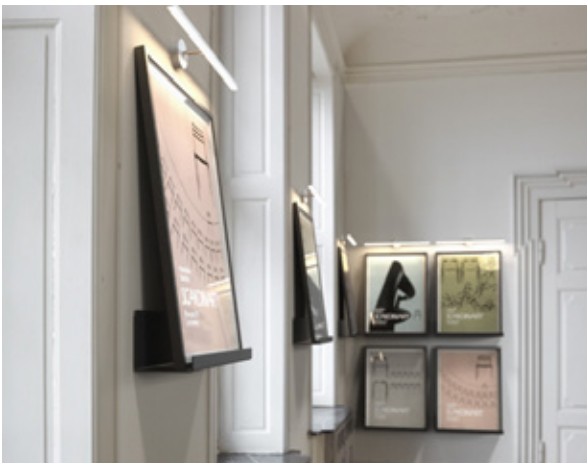


FROST
DENMARK

THE UNU SYSTEM LOOKBOOK



ELEGANT, SLIM LINE, FLOATING SHELF SYSTEM

UNU Features

- Modern, simple and timeless Danish design.
- The products can be assembled in a number of combinations (composed of modules).
- Large carrying capacity in lightweight material.
- The hidden wall mounting system gives a minimalistic appearance
- The maximum load is 40 kg. For heavier load, 6 mm thickness is available on request.
- Safe mounting. Can only be disassembled with use of tools, making them useful in public areas.
- Can be combined with NOVA and NOVA2, for example hangers and hooks.
- Produced in aluminum with a powder coating in black or white.
- Multiple applications, including towels or cosmetics in the bathroom and books or ornaments in the living room.
- With the different size options you can create an individual shelf system or even use it as a TV-lowboard or laptop workstation.
- Use the plank connection for mounting plates in a straight line.
- Simple assembly that can create a "whole" wall without visible joints and accessories.
- Do not use wall panels, wall rails or "strings". There are no boundaries and you are free to create.
- Aluminum can be recycled.
- Nonflammable.
- Fits with other minimalist designs, such as modern kitchen and bathroom designs.
- Good resistance to damage and scratches.
- Color-resistant.

Deviating dimensions

In addition to standard measures, the shelves are also available in 6 mm in sizes: 600 x 6 mm and 1000 x 6 mm. The maximum plank load is 100 kg. Extra weight capacity is possible via brackets.

Laser cords for electrical accessories and cables are extra and available on request. The UNU rack system can be customized to match the customer's specific drawings.







WARDROBE





KITCHEN

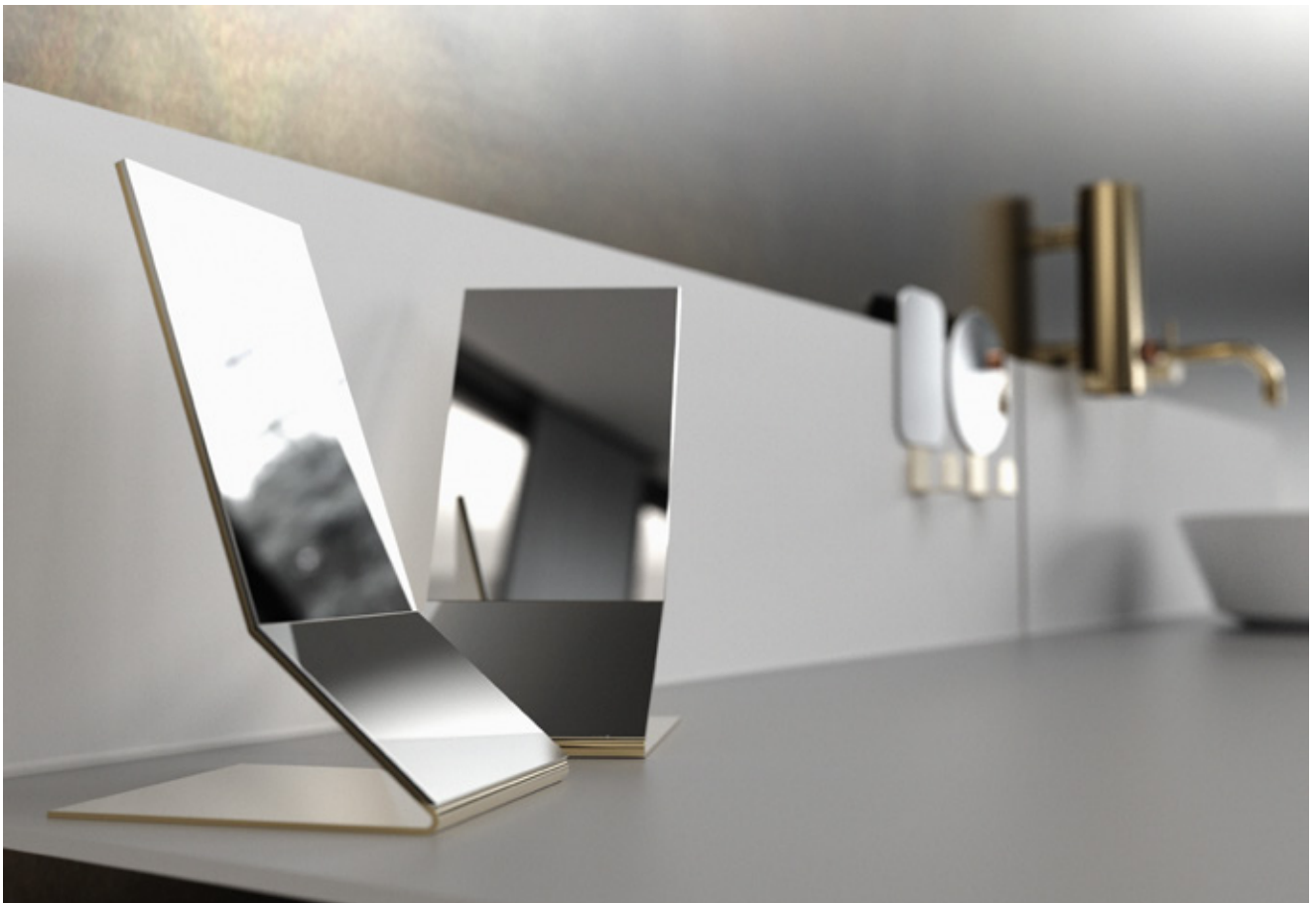








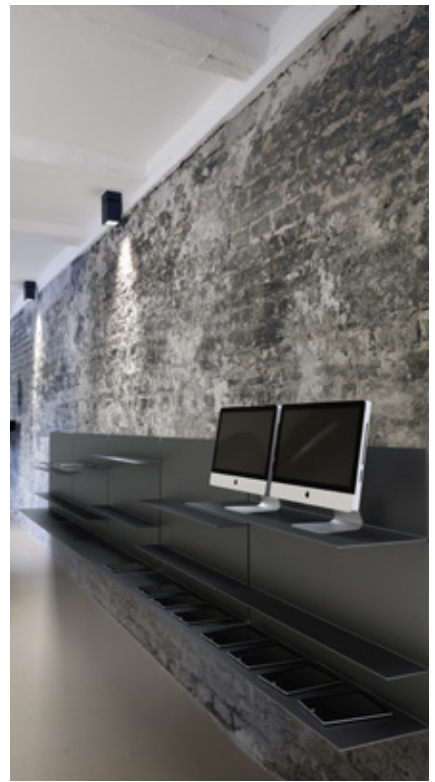
BATHROOM





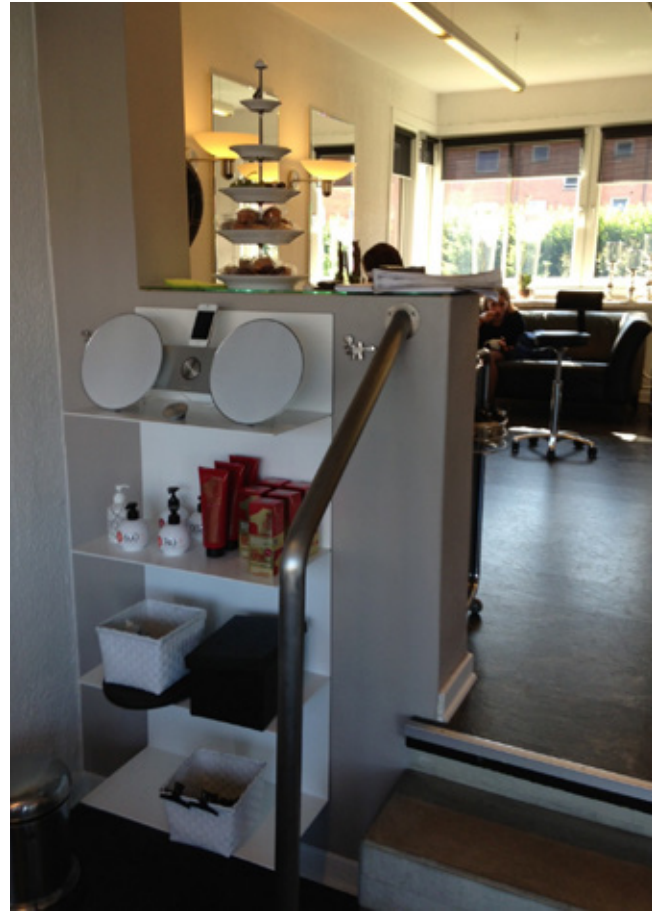






BUSINESS









IN-STORE







LIVING





FROST A/S

BAVNE ALLÉ 6E
DK-8370 HADSTEN
T: +45 87 61 00 32
INFO@FROST.DK
WWW.FROST.DK