

PEDRALI

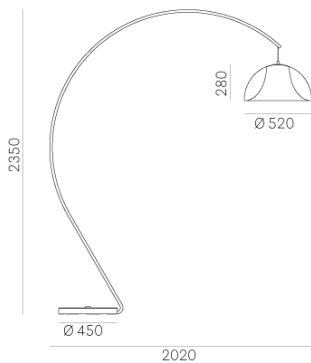
THE ITALIAN ESSENCE

L002 L002T/BA

DESIGN:
ALBERTO BASAGLIA NATALIA ROTA NODARI

Two injected polycarbonate shells are joined to create L002T floor lamp with arch shape. The inner shell is in opal material, diffuses the light and hides the bulb at the same time, the external shell allows the use of different shades of colours. Powder coated steel base and stem.

INFORMATION REQUEST



TRANSPARENT DIFFUSER



TR GT RT

PRESS

FULL COLOUR DIFFUSER



BI NERO

STRUCTURE



BI NERO

